

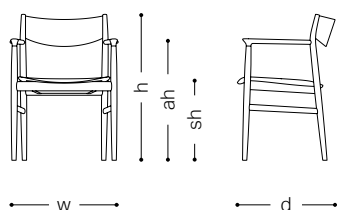
# CondeHouse Collection 2024

## Item List

## Description for the Item List

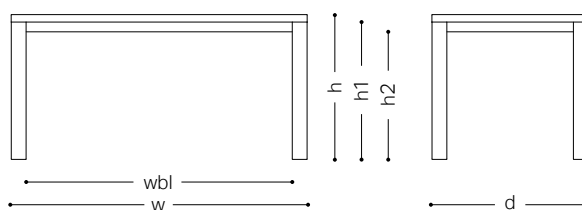
<b>Wood coating</b>	Wood and wood coating available to each model
<b>Fabric and leather</b>	Check the applicability of fabric and leather to each model.
<b>Make-it-lower</b>	Items that can be lowered by cutting legs
<b>Covering seat</b>	Items with a Covering seat seat
<b>Leather stitching</b>	Items with leather stitching when upholstered with leather
<b>Designer</b>	The name of a designer

### Size description for chairs



w ..... width  
d ..... depth  
h ..... height  
sh ..... seat height  
ah ..... arm height  
wt ..... weight (kg)

### Size description for tables



w ..... width  
d ..... depth  
h ..... height  
t ..... thickness  
h1 ..... height from the floor to the bottom of the top board  
h2 ..... height from the floor to the cross pieces of the top board  
wbl ..... width between legs  
dia ..... diameter

\*Size description by 5 mm

\*Please note that there may be some measurement errors in size of chairs and sofas by the thickness of upholstery.

## Price description for chairs

	F1	F2	F3	F4/CL1	F5/L2	L3	L4		
① After-tax Before-tax	Japanese Elm							②	
	Japanese Ash Japanese Cherry								
	Japanese Oak								③
	Walnut								
④	Only covering seat								

① Wood \*1

② Fabric\*2 / Leather grade\*3

③ Price by grade

④ Price of a Covering seat

\*1 Please see p. 266 to 268

\*2 Please see p. 269 to 271

\*3 Please see p. 272 to 273

## QR code



The QR code at the top right of each page enables you to access our web page where you can see more images of our products.

## Grain

### Random match

Wood planks or veneer sheets are joined at random, of which expressive surface patterns require craftspeople for high skills and an eye for beauty.

### Book match

Two pieces of wood planks or veneer sheets with similar surface patterns are arranged side by side to look like a book opened, which makes surface patterns look more dynamic by grains running symmetrically.

● 20 25 30 35 40 45 50 The figures in the boxes represent sales periods more than 20 years.

● The seat fabric and leather price is classified in seven grades.

● Delivery and installation are separately charged.

\* Please contact for more details.



A well-balanced, comforting chair good for formal occasions. It has a wide and high hexagon backrest that supports your body from all angles. Seat and back cushions provide comfort to enhance your dining experience. A fascinating chair for spending a good time with people close to you.



**Wood coating**

Japanese Oak NF / WNF / MBR / DBR / GY / DGY / BL

**Make-it-lower**

Chair: **10mm** **20mm** **30mm** **40mm**

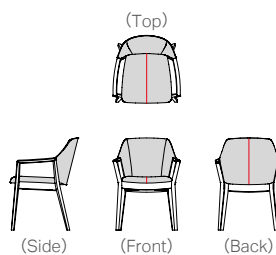
**Leather stitching**

Stitch 

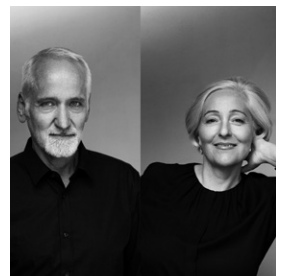
You can make it no-stitching with additional charge. Leather stitching is applied to the following:

- Armchair
  - Armchair H
  - Side Chair
  - Side Chair H
- [The drawing for Armchair]

Additional charge 



**Designer**



Hoffmann Kahleiss Design  
Germany



① Japanese Oak NF MG-CGY/L3



② Japanese Oak GY Sarmassa LGY/F4

**Armchair**  
**Armchair H**  
[Image ①]

w: 595 d: 610  
h: 815 (835)  
sh: 455 (475)  
ah: 600 (620)  
wt: 8.5

	F1	F2	F3	F4/CL1	F5/L2	L3	L4
Japanese Oak	[Material swatch]						
Leather stitching	[Material swatch]						

**Side Chair**  
**Side Chair H**  
[Image ②]

w: 525 d: 610  
h: 815 (835)  
sh: 455 (475)  
wt: 8.0

Japanese Oak	[Material swatch]						
Leather stitching	[Material swatch]						

\*The figures in the angle brackets express the height of H type.