

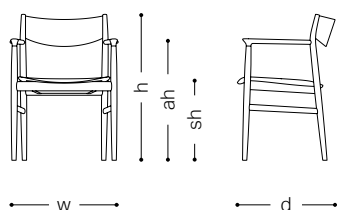
# CondeHouse Collection 2024

## Item List

## Description for the Item List

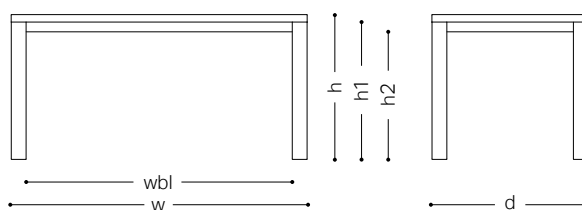
<b>Wood coating</b>	Wood and wood coating available to each model
<b>Fabric and leather</b>	Check the applicability of fabric and leather to each model.
<b>Make-it-lower</b>	Items that can be lowered by cutting legs
<b>Covering seat</b>	Items with a Covering seat seat
<b>Leather stitching</b>	Items with leather stitching when upholstered with leather
<b>Designer</b>	The name of a designer

### Size description for chairs



w ..... width  
d ..... depth  
h ..... height  
sh ..... seat height  
ah ..... arm height  
wt ..... weight (kg)

### Size description for tables



w ..... width  
d ..... depth  
h ..... height  
t ..... thickness  
h1 ..... height from the floor to the bottom of the top board  
h2 ..... height from the floor to the cross pieces of the top board  
wbl ..... width between legs  
dia ..... diameter

\*Size description by 5 mm

\*Please note that there may be some measurement errors in size of chairs and sofas by the thickness of upholstery.

## Price description for chairs

	F1	F2	F3	F4/CL1	F5/L2	L3	L4	
① After-tax Before-tax	Japanese Elm							②
	Japanese Ash Japanese Cherry							
	Japanese Oak							
	Walnut							
④	Only covering seat							③

① Wood \*1

② Fabric\*2 / Leather grade\*3

③ Price by grade

④ Price of a Covering seat

\*1 Please see p. 266 to 268

\*2 Please see p. 269 to 271

\*3 Please see p. 272 to 273

## QR code



The QR code at the top right of each page enables you to access our web page where you can see more images of our products.

## Grain

### Random match

Wood planks or veneer sheets are joined at random, of which expressive surface patterns require craftspeople for high skills and an eye for beauty.

### Book match

Two pieces of wood planks or veneer sheets with similar surface patterns are arranged side by side to look like a book opened, which makes surface patterns look more dynamic by grains running symmetrically.

● 20 25 30 35 40 45 50 The figures in the boxes represent sales periods more than 20 years.

● The seat fabric and leather price is classified in seven grades.

● Delivery and installation are separately charged.

\* Please contact for more details.



A dining chair designed by Antti Kotilainen based on a Scandinavian design philosophy—only leave the necessary parts. AATOS stands for "an noble thought" in Finnish. This is a well balanced chair that is light and robust. Available in wooden or upholstered backrest, good for both public and home use, and stackable.



**Wood coating**

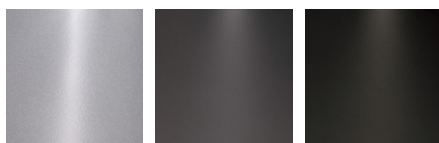
Japanese Oak NF/WNF/MBR/DBR/GY/DGY/BL

**Make-it-lower**

Chair: 10mm 20mm 30mm 40mm

High Chair: up to 150 mm in 10 mm increments

**Footstep Colors**



M-GY

S-GY

S-BL

**Fabric and leather**

Fabric / leather unavailable for Stacking Chair UB and Stacking High Chair UB

F5 Avance

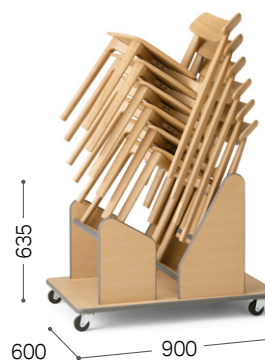
L2 RK

L4 GR

**Designer**



Antti Kotilainen  
Finland



© MDF



① Japanese Oak NF KP-DBR/L3



② Japanese Oak NF



③ Japanese Oak DBR Tonica LGY/F4



④ Japanese Oak NF Tonica LGY/F4

		F1	F2	F3	F4/CL1	F5/L2	L3	L4	
<b>Stacking Chair (Upholstered Seat)</b> <b>Stacking Chair H (Upholstered Seat)</b> [Image ①]	w: 505 d: 495 h: 745 (765) sh: 450 (470) wt: 5.0	Japanese Oak							
		*Stackable up to 4							
<b>Stacking Chair (Wooden Seat)</b> <b>Stacking Chair H (Wooden Seat)</b> [Image ②]	w: 505 d: 495 h: 745 (765) sh: 430 (450) wt: 5.0	Japanese Oak							
		*Accessory: rubber cushions (four) *Stackable up to 4							
<b>Stacking Chair UB (Upholstered Seat)</b> <b>Stacking Chair UB H (Upholstered Seat)</b> [Image ③]	w: 505 d: 495 h: 750 (770) sh: 450 (470) wt: 5.0	Japanese Oak							
		*Stackable up to 4   Limit in fabric / leather							
<b>Stacking Chair UB (Wooden Seat)</b> <b>Stacking Chair UB H (Wooden Seat)</b> [Image ④]	w: 505 d: 495 h: 750 (770) sh: 430 (450) wt: 5.0	Japanese Oak							
		*Accessory: rubber cushions (four) *Stackable up to 4   Limit in fabric / leather							
<b>Dolly</b> [Image ⑤]	w: 600 d: 900 h: 635 *Stackable up to 6	MDF							

\*The figures in the angle brackets express the height of H type.



⑥ Japanese Oak MBR MG-BL/L3  
Footstep: S-GY



⑦ Japanese Oak NF Footstep: M-GY



⑧ Japanese Oak MBR MG-BL/L3  
Footstep: S-GY



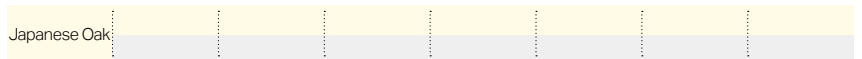
⑨ Japanese Oak NF MG-BL/L3  
Footstep: M-GY



F1 | F2 | F3 | F4 / CL1 | F5 / L2 | L3 | L4

Stacking High Chair  
(Upholstered Seat)  
Stacking High Chair H  
(Upholstered Seat)

w: 540 (560)  
d: 515 (525)  
h: 965 (1065)  
sh: 670 (770)  
wt: 7.0



\*Stackable up to 4 | Three colors for available for the footstep |

[Image ⑥]

Stacking High Chair  
(Wooden Seat)  
Stacking High Chair H  
(Wooden Seat)

w: 540 (560)  
d: 515 (525)  
h: 965 (1065)  
sh: 650 (750)  
wt: 7.0

\*Accessory: rubber cushions (four)  
\*Stackable up to 4 | Three colors for available for the footstep |

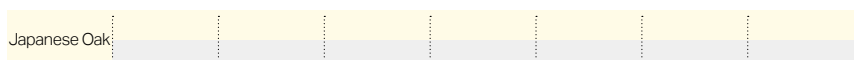


[Image ⑦]

F1 | F2 | F3 | F4 / CL1 | F5 | L3 | L4

Stacking High Chair UB  
(Upholstered Seat)  
Stacking High Chair UB H  
(Upholstered Seat)

w: 540 (560)  
d: 515 (525)  
h: 970 (1070)  
sh: 670 (770)  
wt: 7.0

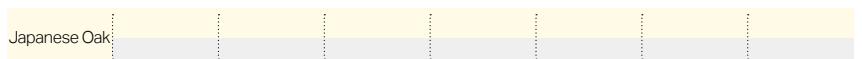


\*Stackable up to 4 | Limit in fabric / leather | Three colors for available for the footstep |

[Image ⑧]

Stacking High Chair UB  
(Wooden Seat)  
Stacking High Chair UB H  
(Wooden Seat)

w: 540 (560)  
d: 515 (525)  
h: 970 (1070)  
sh: 650 (750)  
wt: 7.0



\*Accessory: rubber cushions (four)  
\*Stackable up to 4 | Limit in fabric / leather | Three colors for available for the footstep |

[Image ⑨]

\*The figures in the angle brackets express the height of H type.